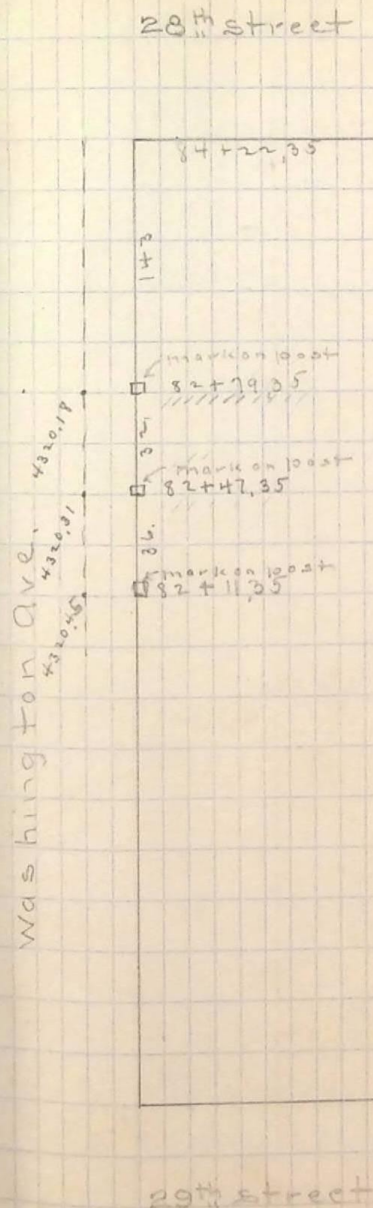


Apr. 6 1905

Property line grade for J. N. Pierce
in front of Terrace South side
Washington between 28th & 29th St.
O.K. Unit }
A.D.G. Rod } 10 a.m. to 11.30 a.m.
H.B.D. Chem }

Sta #	H.I. T.P. Gr. Elev.	curb Rod	Propo. Rod.	cut or Fill
B.M.	4320.95 + 3.16	on N. bolt to Hyd. 28 th + Wash.		
H.I.	4324.11			
2+79.35	20.19	3.43-5	3.43	F. 0.9
+47.35	20.31	3.50-5	3.30	F. 0.8
+11.35	20.45	3.66-5	3.15	F. 0.6

check on grade set for O'mill
at sta. 79+74.15 page 23 O.K.
rod 159



For Rates & grade changes see pg. 23